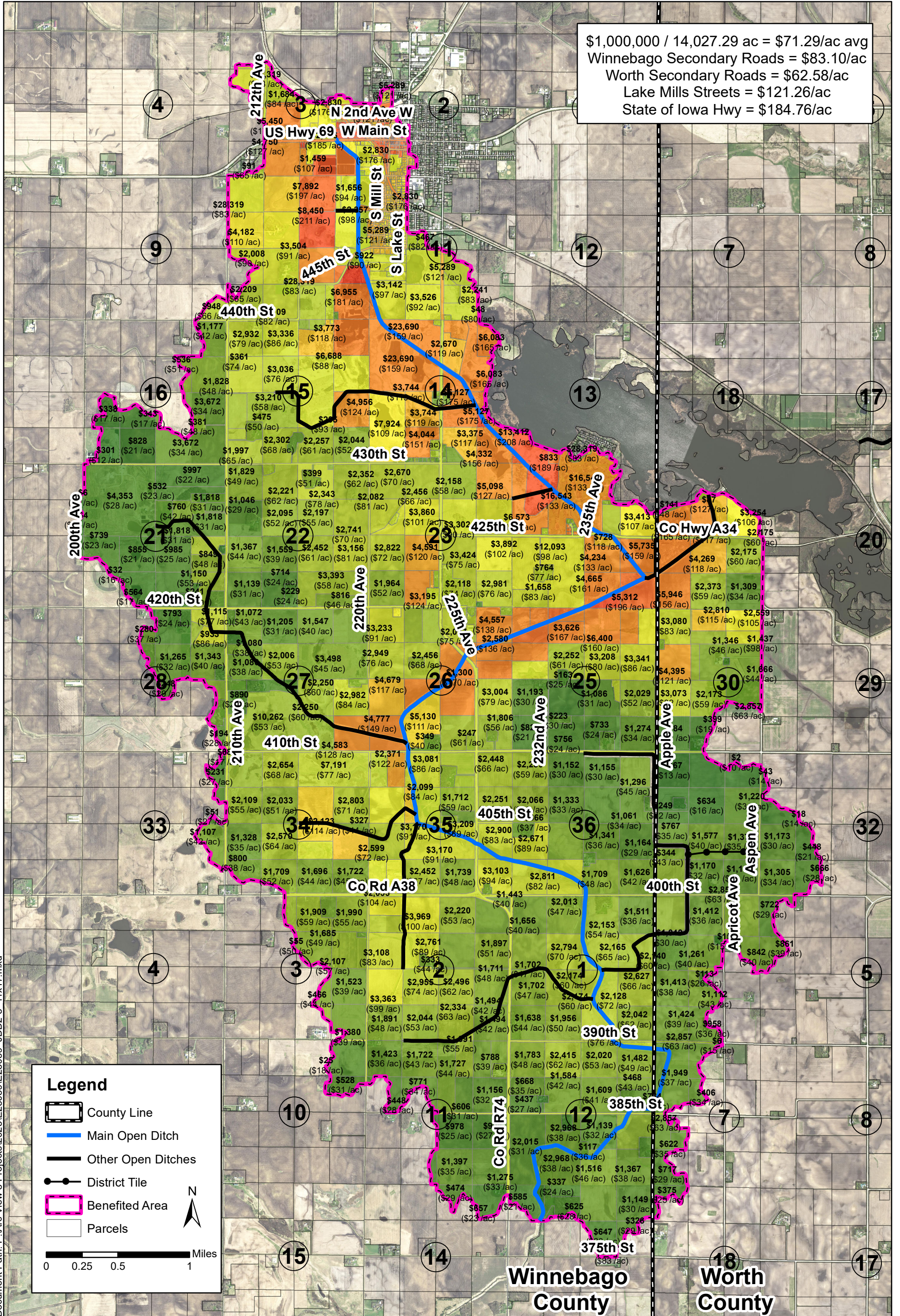


Joint Drainage District No. 2-3 Main Open Ditch Dollars Map Based on \$1,000,000 Levy

Winnebago and Worth County, Iowa

\$1,000,000 / 14,027.29 ac = \$71.29/ac avg
Winnebago Secondary Roads = \$83.10/ac
Worth Secondary Roads = \$62.58/ac
Lake Mills Streets = \$121.26/ac
State of Iowa Hwy = \$184.76/ac

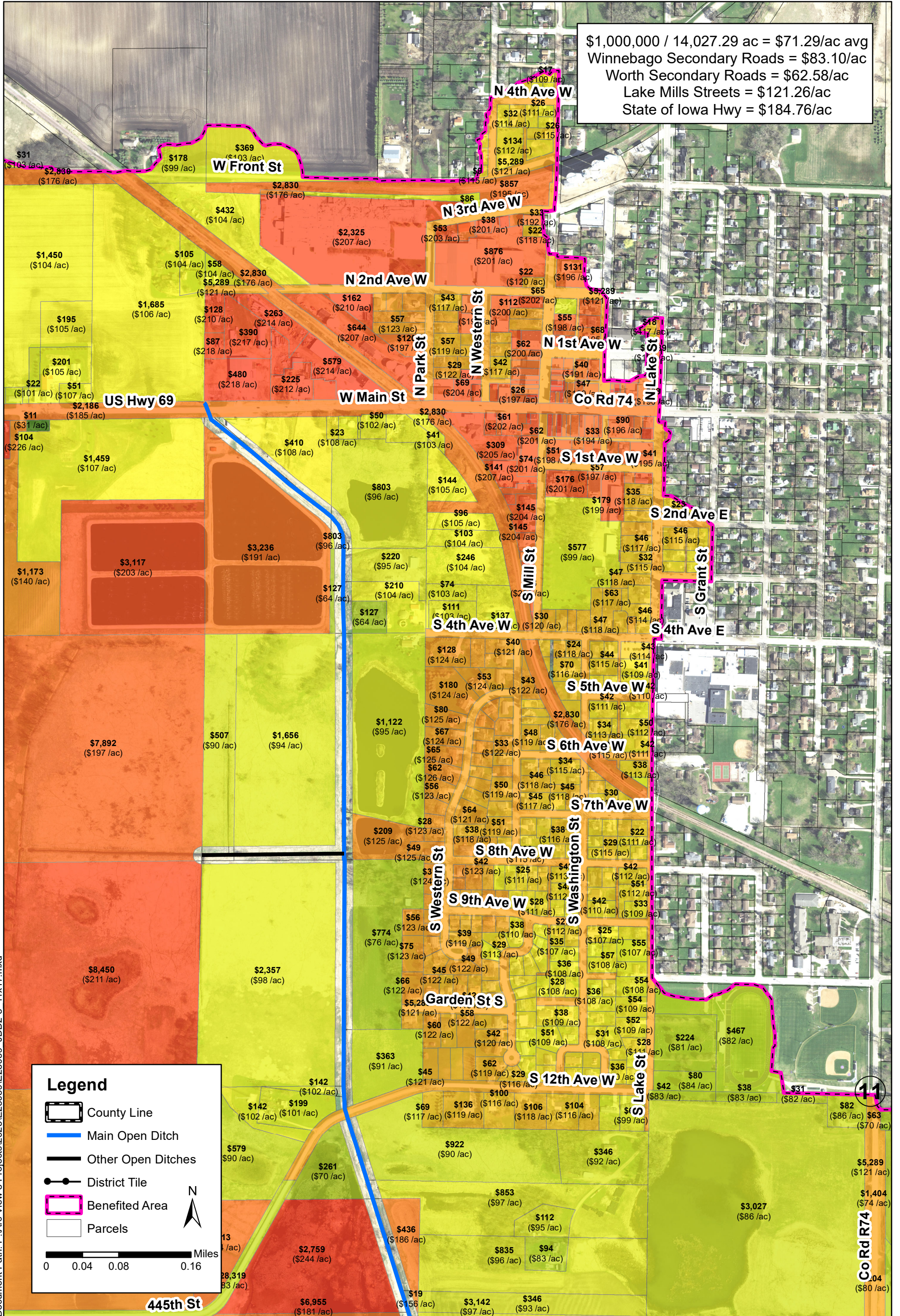


Document Path: P:\Arc View 8 Projects\2023\I23039\I23039 JDD2-3 11x17.mxd

Joint Drainage District No. 2-3 Main Open Ditch Dollars Map Based on \$1,000,000 Levy

Winnebago and Worth County, Iowa

\$1,000,000 / 14,027.29 ac = \$71.29/ac avg
Winnebago Secondary Roads = \$83.10/ac
Worth Secondary Roads = \$62.58/ac
Lake Mills Streets = \$121.26/ac
State of Iowa Hwy = \$184.76/ac



Legend

- County Line
- Main Open Ditch
- Other Open Ditches
- District Tile
- Benefited Area
- Parcels

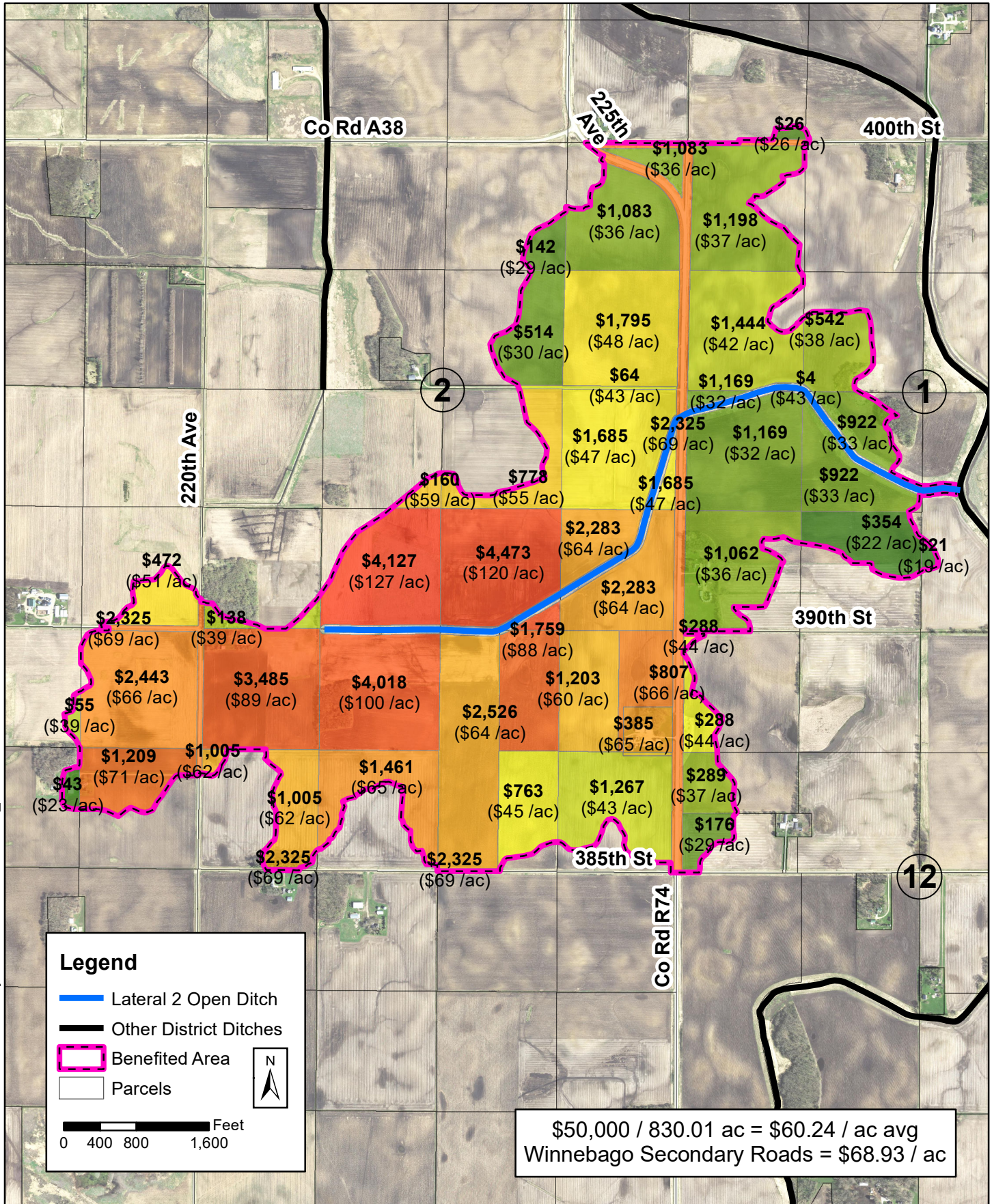
0 0.04 0.08 0.16 Miles

N

Document Path: P:\Arc View 8 Projects\2023\23039\JDD2-3 11x17.mxd

Co Rd R74
11
04
(\$80 /ac)

Joint Drainage District No. 2-3
Lateral 2 Open Ditch
Dollars Map Based on \$50,000 Levy
 Winnebago and Worth County, Iowa



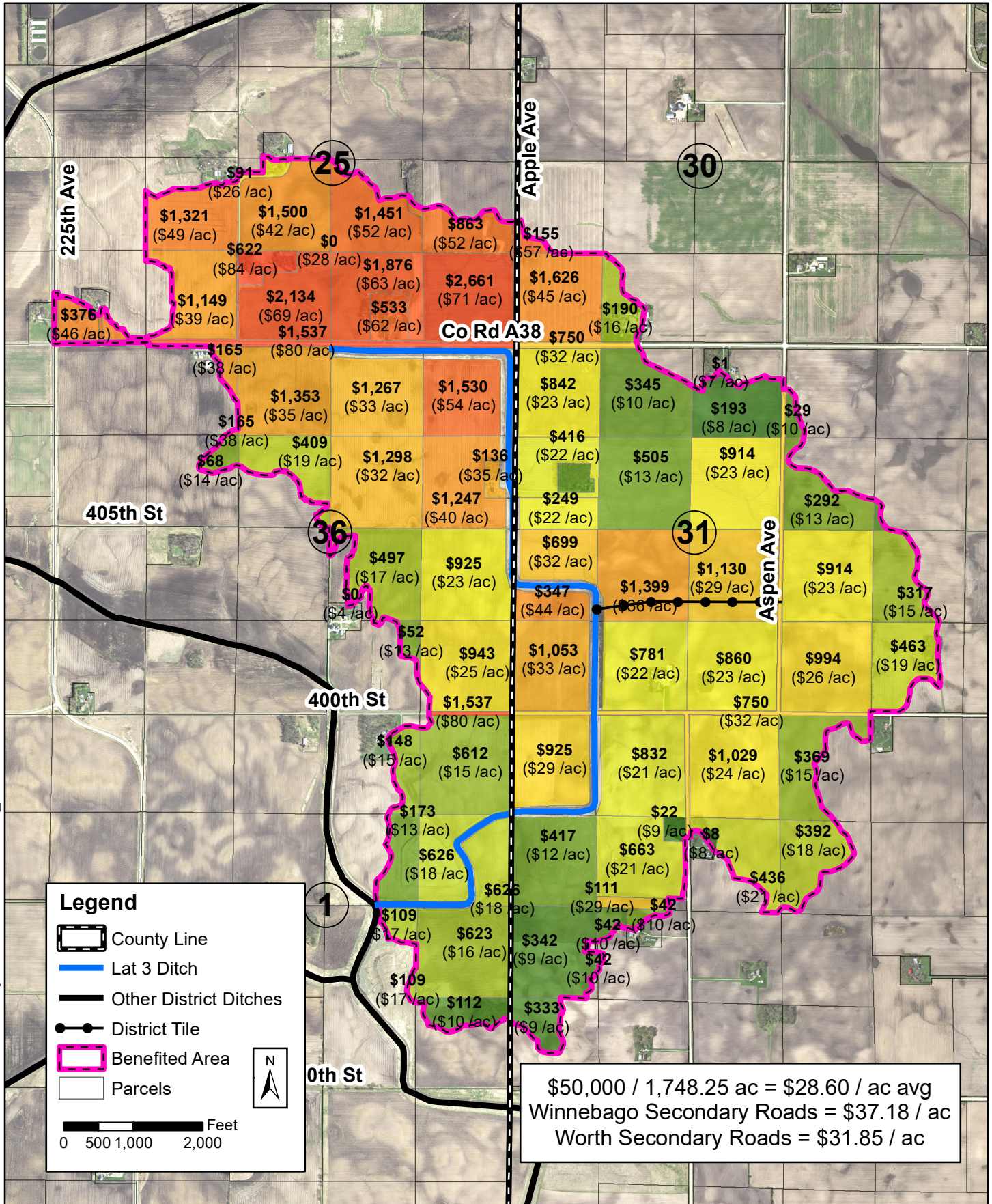
Legend

- Lateral 2 Open Ditch
- Other District Ditches
- Benefited Area
- Parcels

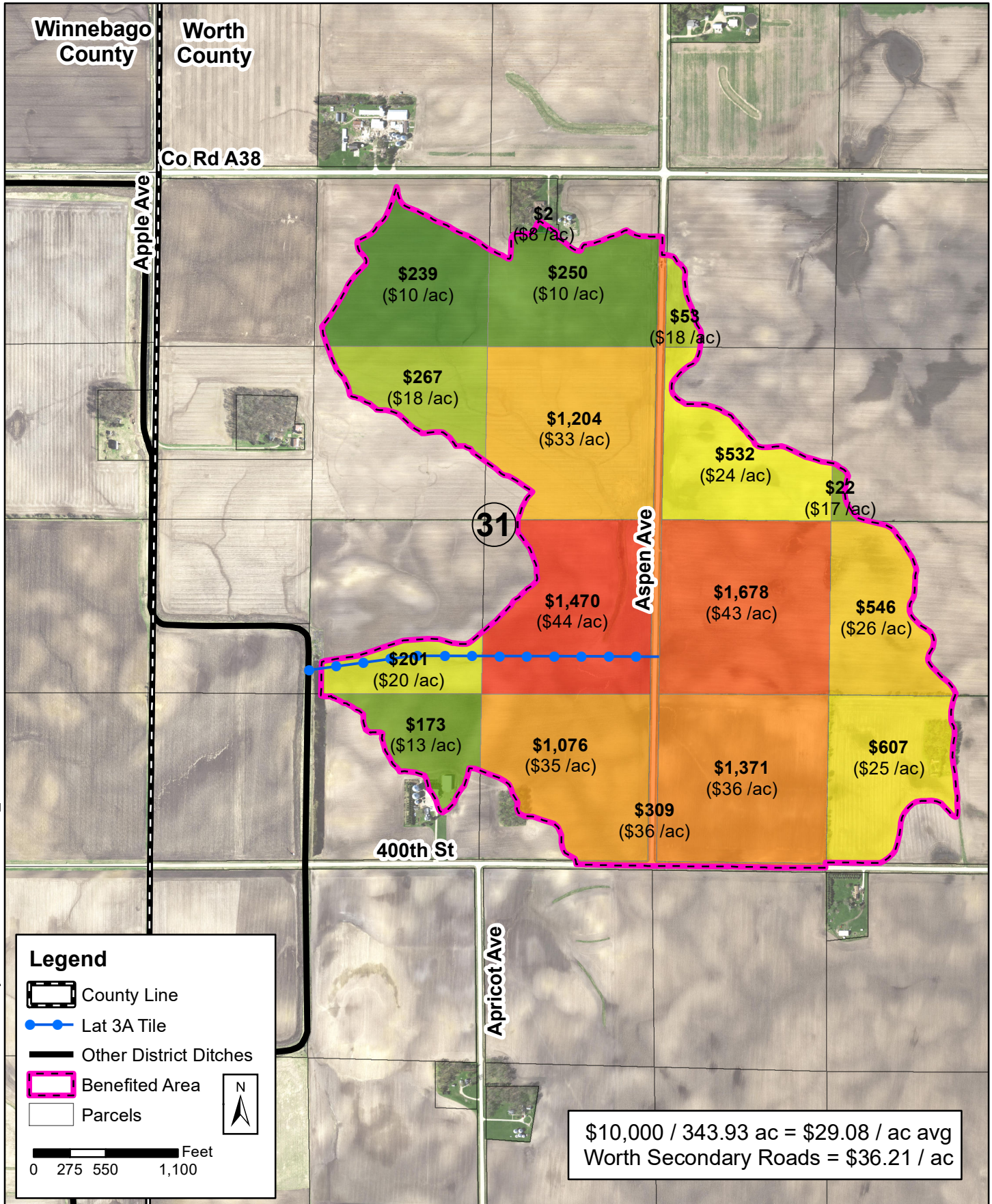
0 400 800 1,600 Feet

$\$50,000 / 830.01 \text{ ac} = \$60.24 / \text{ac avg}$
 Winnebago Secondary Roads = \$68.93 / ac

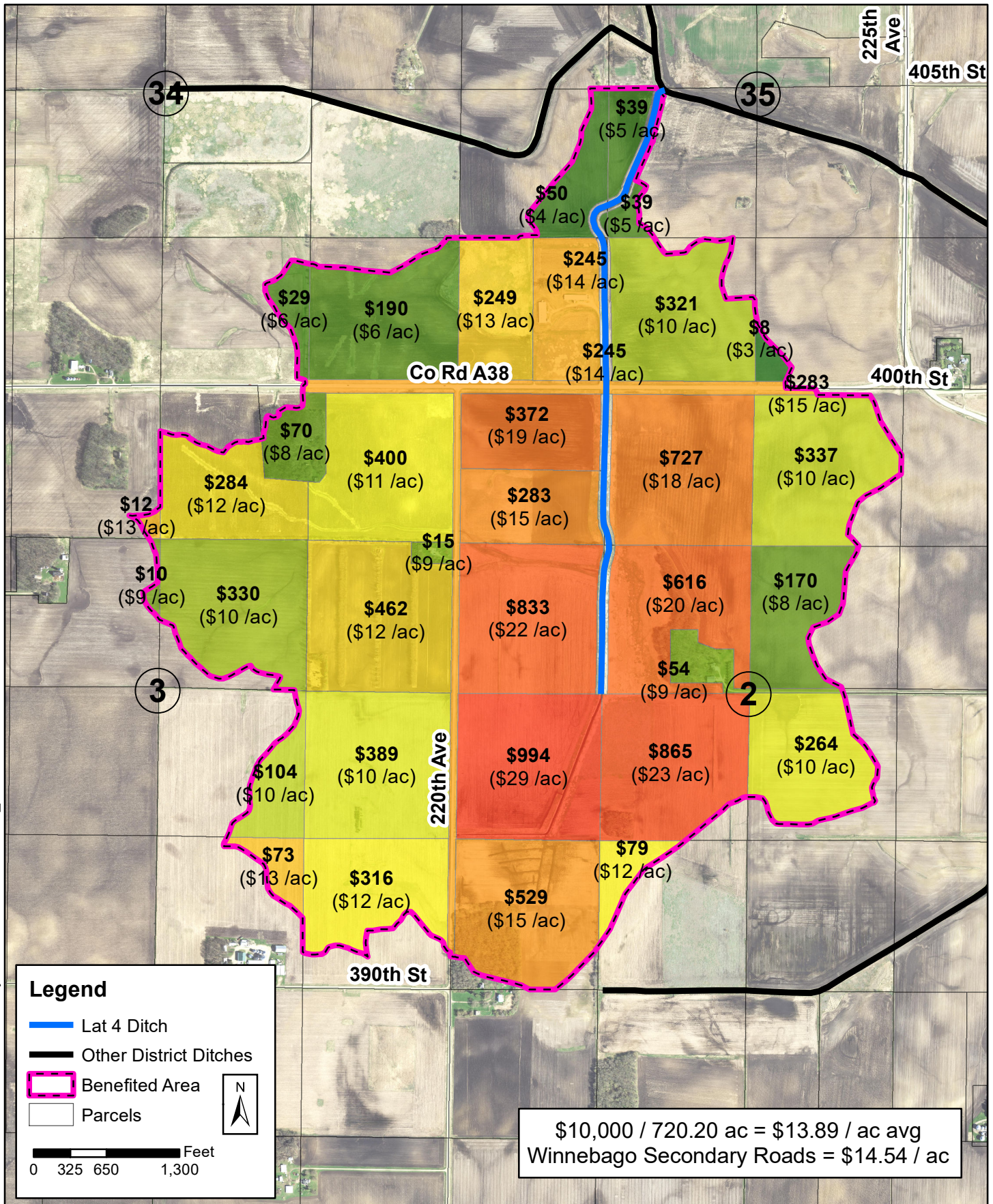
Joint Drainage District No. 2-3
Lateral 3 Open Ditch
Dollars Map Based on \$50,000 Levy
 Winnebago and Worth County, Iowa



Joint Drainage District No. 2-3
Lateral 3A Tile
Dollars Map Based on \$10,000 Levy
 Winnebago and Worth County, Iowa

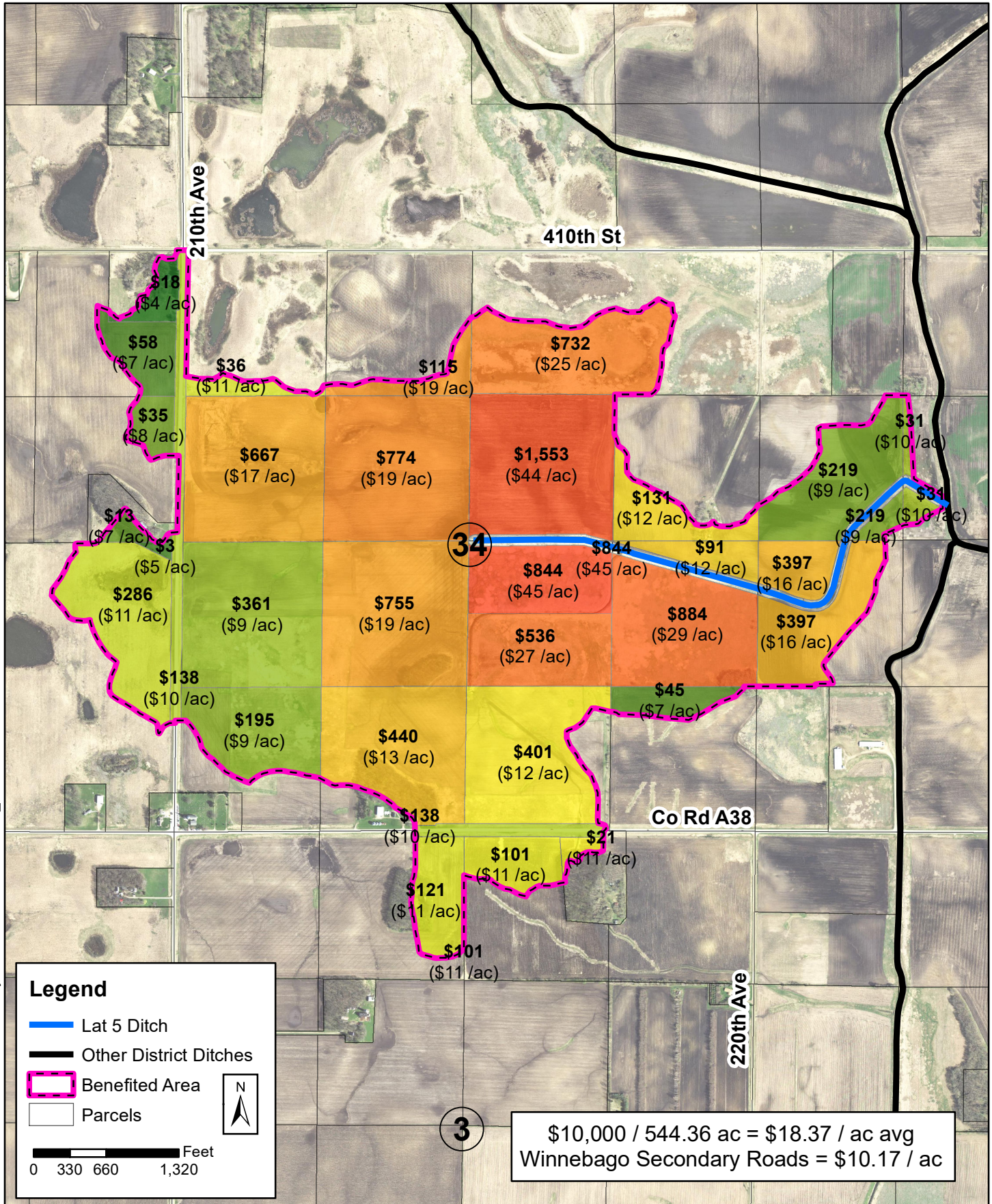


Joint Drainage District No. 2-3
Lateral 4 Open Ditch
Dollars Map Based on \$10,000 Levy
 Winnebago County, Iowa

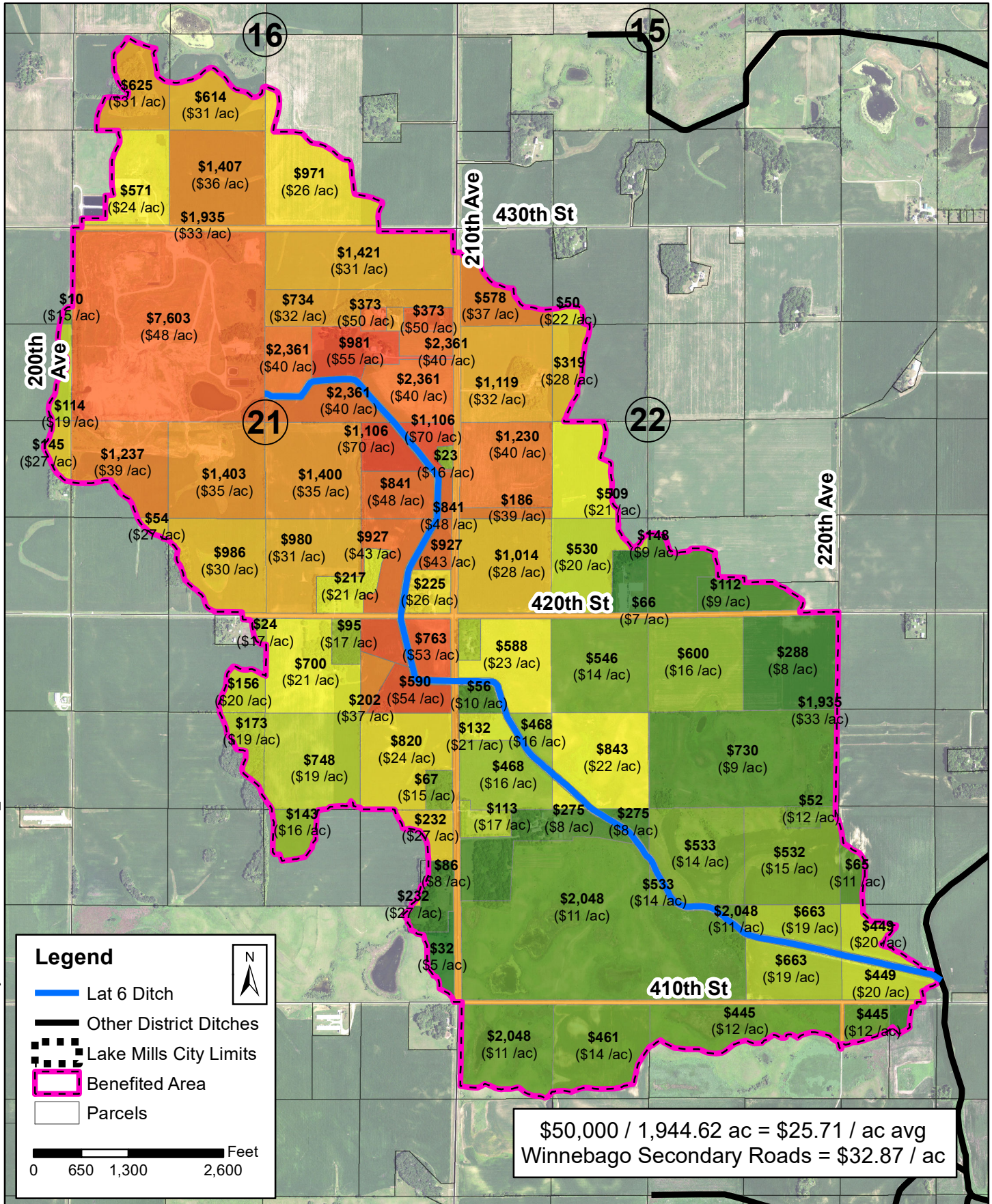


Document Path: P:\Arc View 8 Projects\2023\E23039\E23039_JDD2-3.mxd

Joint Drainage District No. 2-3
Lateral 5 Open Ditch
Dollars Map Based on \$10,000 Levy
 Winnebago County, Iowa



Joint Drainage District No. 2-3
Lateral 6 Open Ditch
Dollars Map Based on \$50,000 Levy
 Winnebago County, Iowa



Legend

- Lat 6 Ditch
- Other District Ditches
- Lake Mills City Limits
- Benefited Area
- Parcels

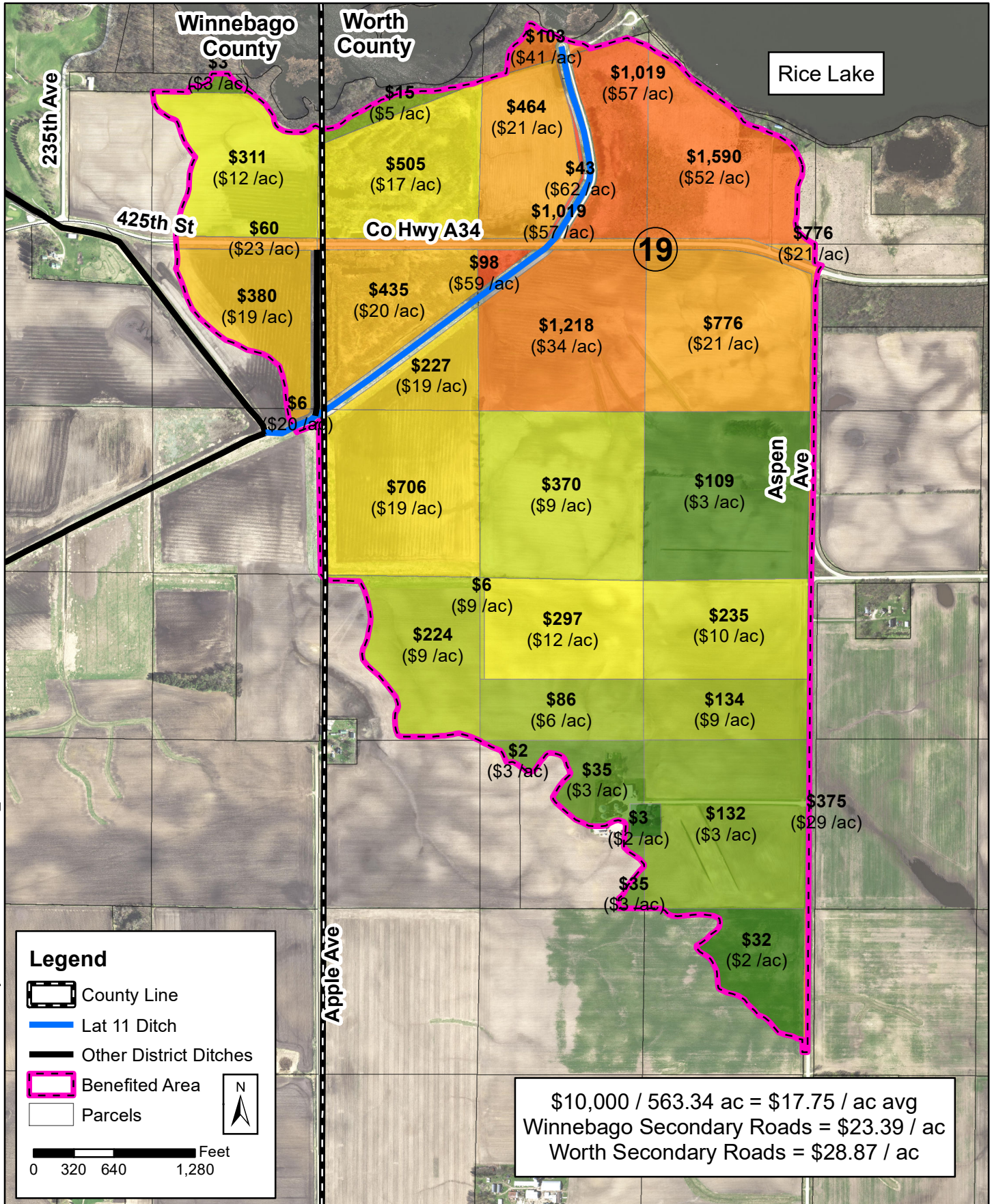
N

0 650 1,300 2,600 Feet

$\$50,000 / 1,944.62 \text{ ac} = \$25.71 / \text{ac avg}$
 Winnebago Secondary Roads = \$32.87 / ac

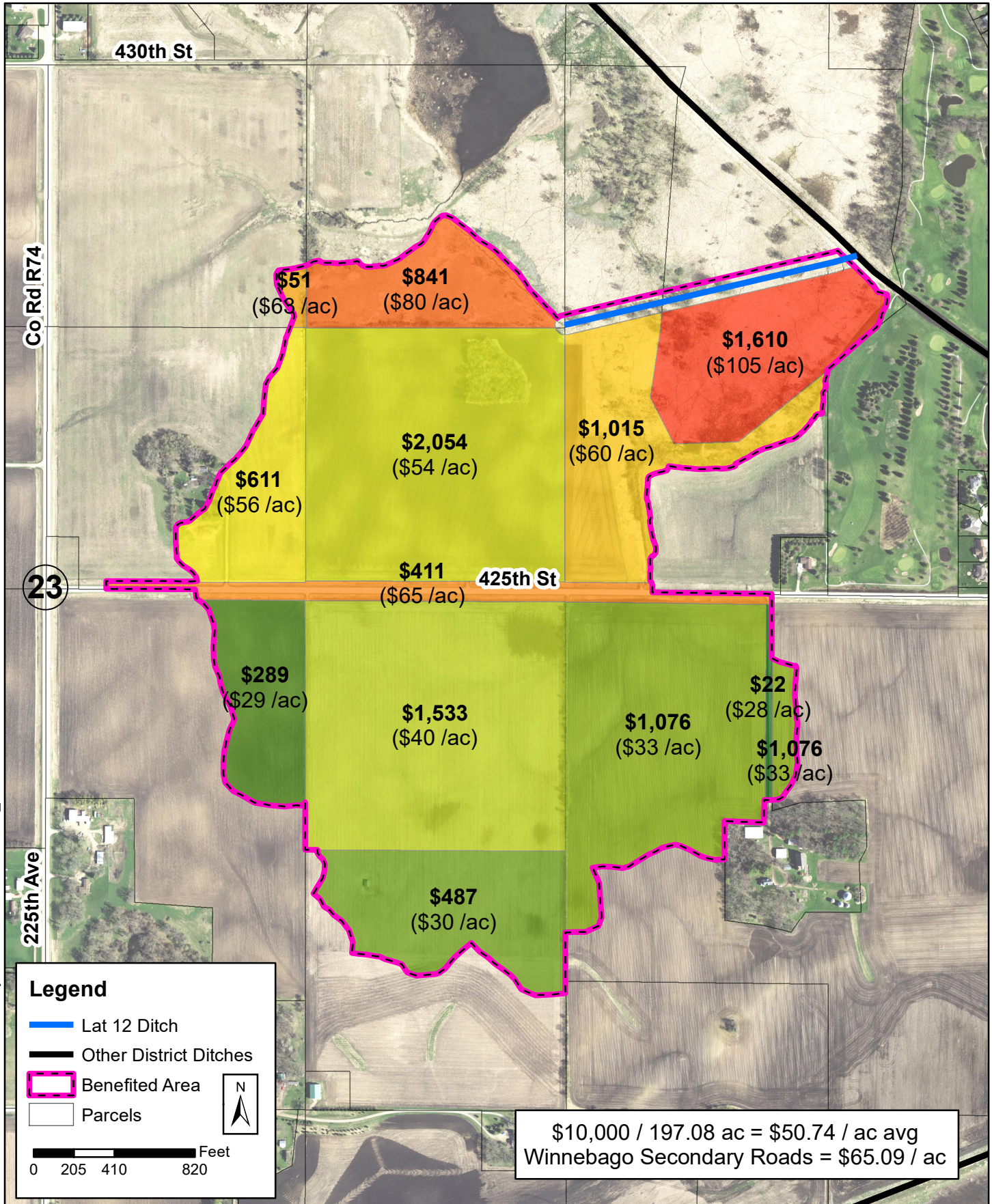
Joint Drainage District No. 2-3 Lateral 11 Open Ditch Dollars Map Based on \$10,000 Levy

Winnebago and Worth County, Iowa

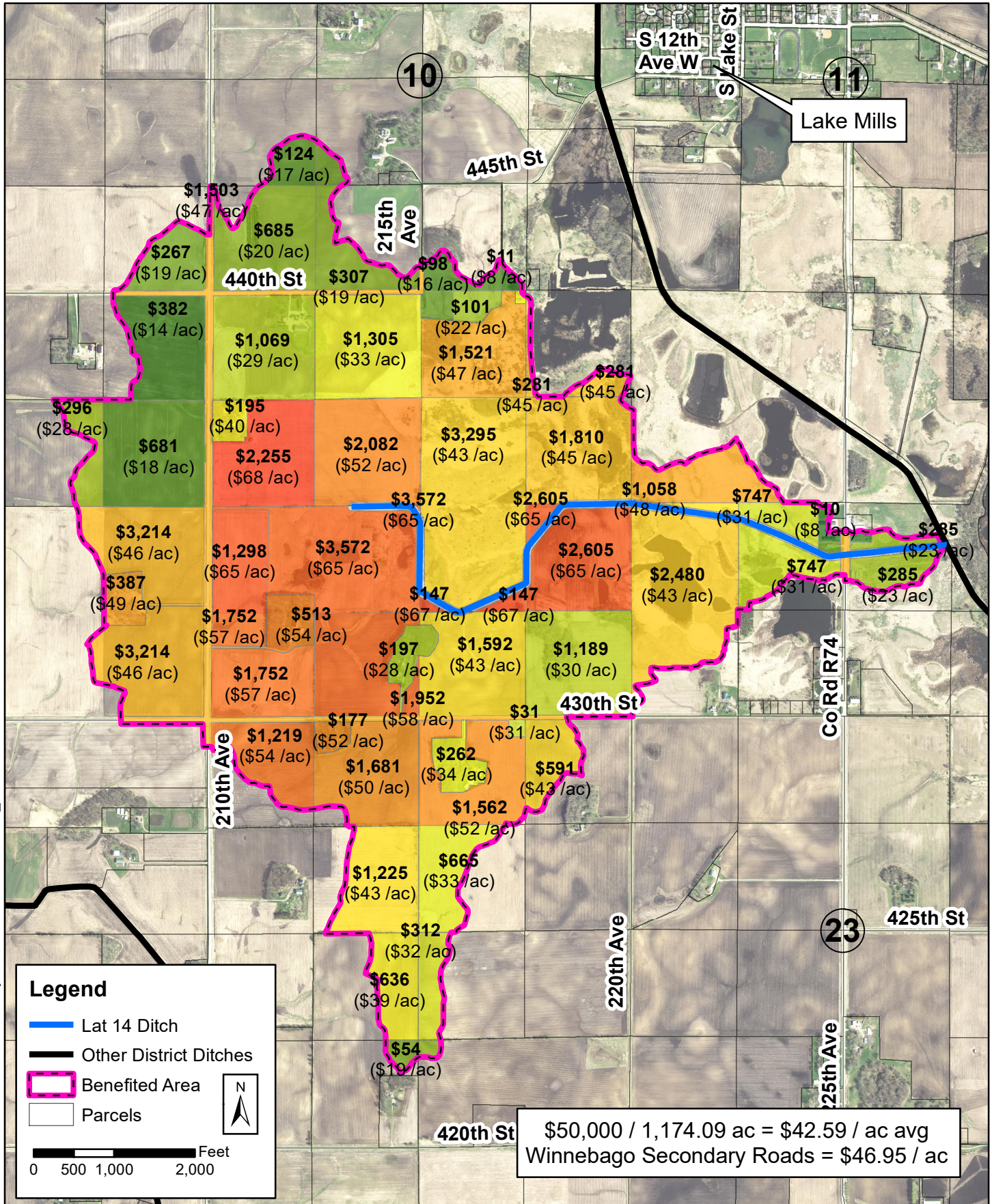


Document Path: P:\Arc View 8 Projects\2023\E23039\E23039_JDD2-3.mxd

Joint Drainage District No. 2-3
Lateral 12 Open Ditch
Dollars Map Based on \$10,000 Levy
 Winnebago County, Iowa




Joint Drainage District No. 2-3
Lateral 14 Open Ditch
Dollars Map Based on \$50,000 Levy
 Winnebago County, Iowa



Document Path: P:\Arc View 8 Projects\2023\E23039\E23039_JDD2-3.mxd

Legend

- Lat 14 Ditch
- Other District Ditches
- Benefited Area
- Parcels

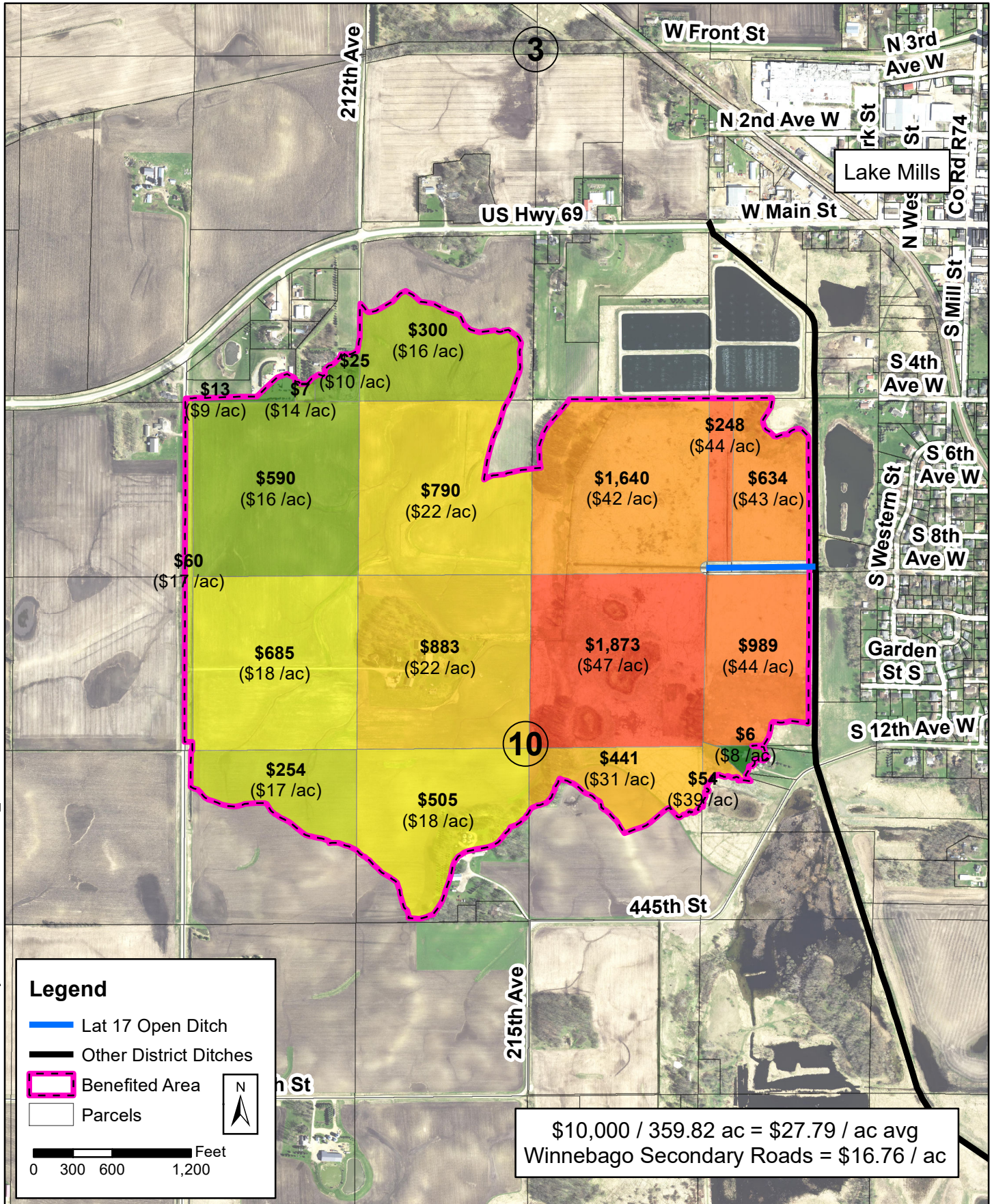


Feet

0 500 1,000 2,000

$\$50,000 / 1,174.09 \text{ ac} = \$42.59 / \text{ac avg}$
 Winnebago Secondary Roads = \$46.95 / ac

Joint Drainage District No. 2-3
Lateral 17 Open Ditch
Dollars Map Based on \$10,000 Levy
 Winnebago County, Iowa



Document Path: P:\Arc View 8 Projects\2023\E23039\E23039_JDD2-3.mxd